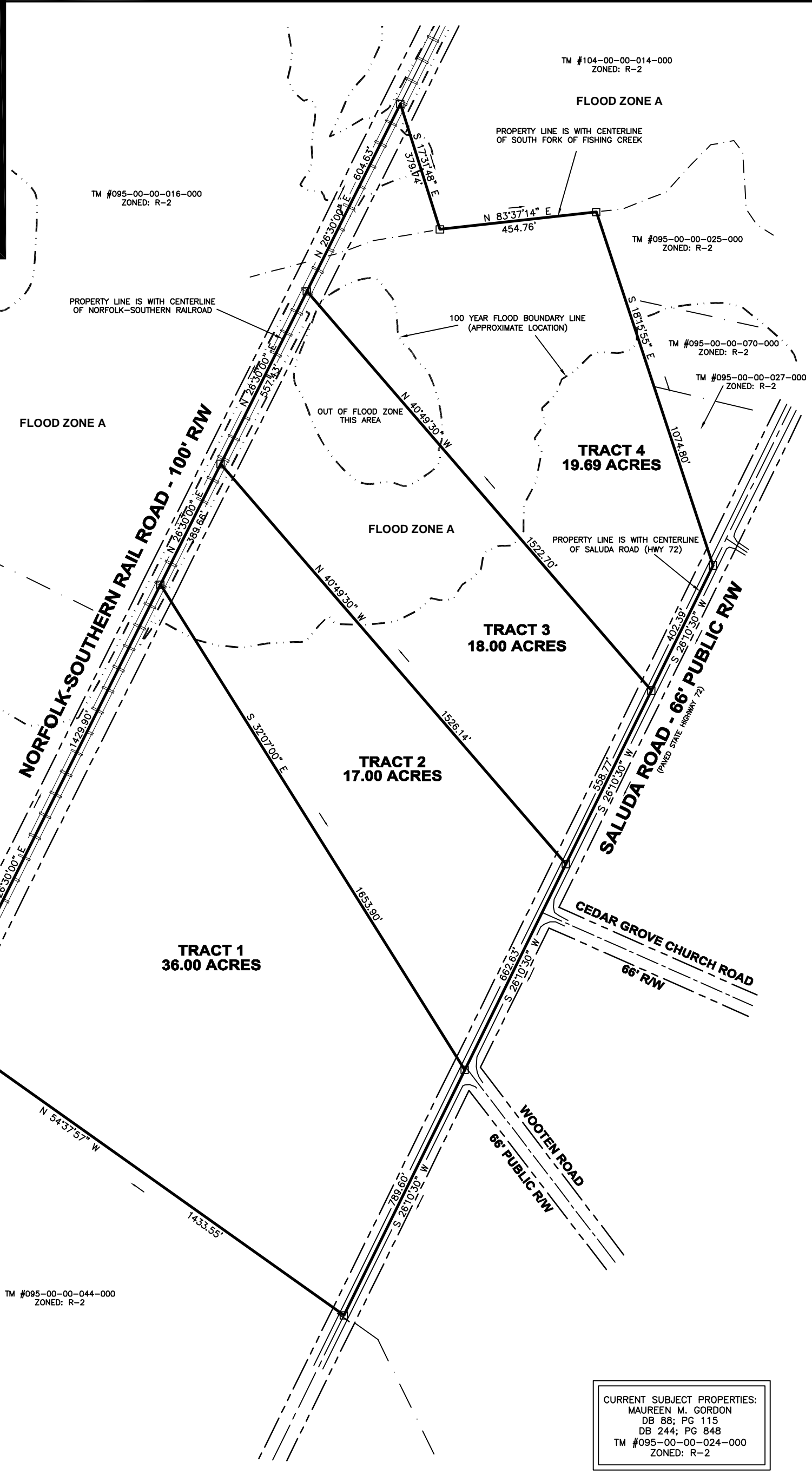


VICINITY MAP (NTS)



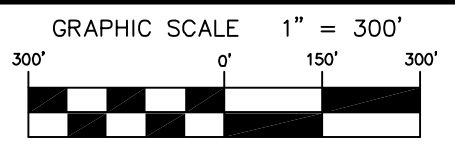
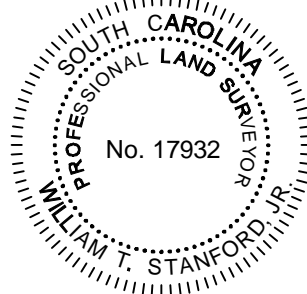
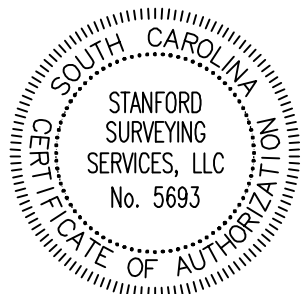
TM #095-00-00-013-000
ZONED: R-2



CURRENT SUBJECT PROPERTIES:
 MAUREEN M. GORDON
 DB 88; PG 115
 DB 244; PG 848
 TM #095-00-00-024-000
 ZONED: R-2

By: William T. Stanford, Jr., SCPLS-17932

SKETCH PREPARED FOR
MAUREEN M. GORDON
 LOCATED ON HIGHWAY 72
 IN THE LEWISVILLE TOWNSHIP
 YORK COUNTY, SOUTH CAROLINA
 SEPTEMBER 24, 2019; REVISED OCTOBER 3, 2019
 ZONED: R-2



STANFORD SURVEYING SERVICES, LLC
 PROFESSIONAL LAND SURVEYING
 343 Ole Simpson Place
 Catawba, S.C. 29704
 803.487.1024